

Geophysical Survey Vessel - Spec sheet

Calesurvey

Kommandor Stuart

- A dedicated geophysical survey vessel with a proven North Sea track record.
- Kommandor Stuart has a spacious working deck area enabling an efficient and safe working environment.
- The survey laboratory is modern and well designed to allow for a full suite of offshore data processing facilities.

Built 1978
Rebuilt 2006
Flag British
Classification DNV
Call sign MPOQH3
Length 60.35m
Width 12m
Draught 5.40m
GT 1286T

Facilities

300m² Working Deck
 300m² Hold Storage
 65m² Laboratory Areas
 1 x 1m moonpool
 Sauna/Gymnasium

Accommodation

14 x Single Berth Cabins
 10 x Twin Berth Cabins
 1 x Four Berth Cabin

Propulsion

Main Engine 1760KW
 Propellor Single, VP
 Bow Thruster 330HP
 Stern Thruster 330HP
 DP System EMRI
 Electrical Power 2 x 350KVA
 1 x 650KVA

Handling Equipment

Port Side Crane 5T @ 14m
 Stern A Frame 15T @ 8m
 Side A Frame 6T @ 6m
 SBES Atlas Deso 15
 MBES R2 Sonic 2024
 DGPS Veripos HP
 DGPS Veripos HF
 DGPS QC Veripos Verify
 QPS QINSy

Heave IXSEA Octans
 Compensation

Gyrocompass VTTSS Meridian
 Surveyor

Velocity Profiling Valeport CTD and
 SVP

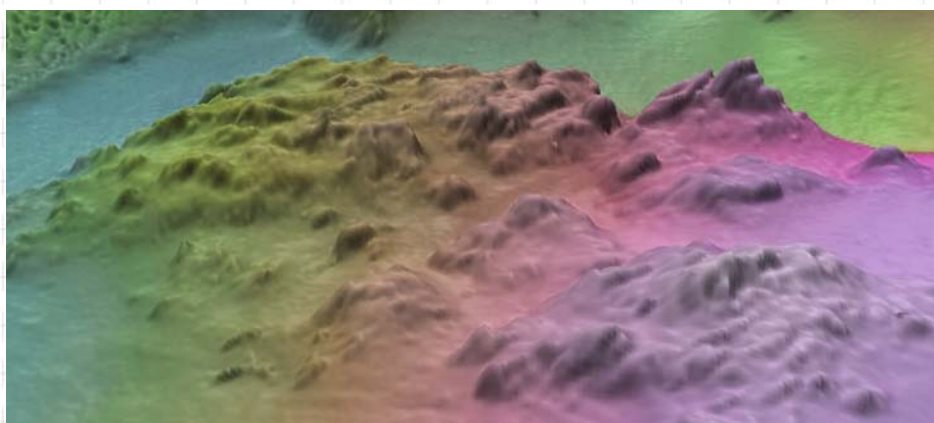
Sidescan Edgetech 4200

Magnetometer Geometrics 881

USBL AA Nexus

SBP 1 Hull mounted 9
 element pinger

SBP 2 Edgetech 512



2DHR Spread

Source 4 x 40 cu in airgun
 array
 Receiver 600/1200m (48/96
 channel) SEAL
 streamer
 Gun Controller EEL Controller
 Digital QC ProMax

Environmental Spread

Van Veen and Day Grab samplers
 Auto sieve and associated sample
 treatment equipment
 SeaBug Drop camera/video system

Geotechnical Spread

3m gravity corer